

Lowe's Pro Academy

Professional training catalog



Scan here



to visit us online at
LowesProSupply.com/Training
or email us at LowesProAcademy@Lowe.com

WHAT'S INSIDE

- 3  Plumbing
- 4  Electrical
- 6  Interior
- 7  Pools
- 8  OSHA
- 9  Appliances
- 10  HUD
- 11  HVAC
- 18  Environmental
- 20  Preventative
- 23  Lawn and Garden
- 24  Seasonal
- 25  PROfessional Development
- 28  Fair Housing
- 29  Paint
- 30  Certifications



Beginner
Plumbing Basics ⌚ 2 hours

Join our plumbing repair class, which covers the fundamentals of plumbing troubleshooting for a variety of applications. Learn about basic plumbing system components, plumbing tools, repair methods and the best ways to troubleshoot plumbing issues.

Pipe Dreams

Learn about plumbing anatomy, troubleshooting and repairs.

Classes in this series include:

Intermediate

Sinkology (sinks) ⌚ 2 hours

Don't Get Flushed (toilets) ⌚ 2 hours

Keep It Clean (tubs and showers) ⌚ 2 hours

Advanced

Domestic Supply Lines ⌚ 2 hours



Advanced
Underground Plumbing ⌚ 2 hours

This course will cover:

- Sanitary sewers
 - Diagnostics
 - Repairs
 - Maintenance
- Storm drains
 - Catch basins
 - Treatment
 - Drain lines





Beginner



Electrical Basics ⌚ 2 hours

Join our electrical class that covers the fundamentals of electrical wiring as it pertains to a variety of applications. This class will employ a hands-on approach to show students the correct methods of basic electrical wiring.

Multimeter Basics ⌚ 2 hours

This class will cover how to use a multimeter and what to use it for. Topics include circuit basics and continuity/resistance related to appliance electrical troubleshooting.



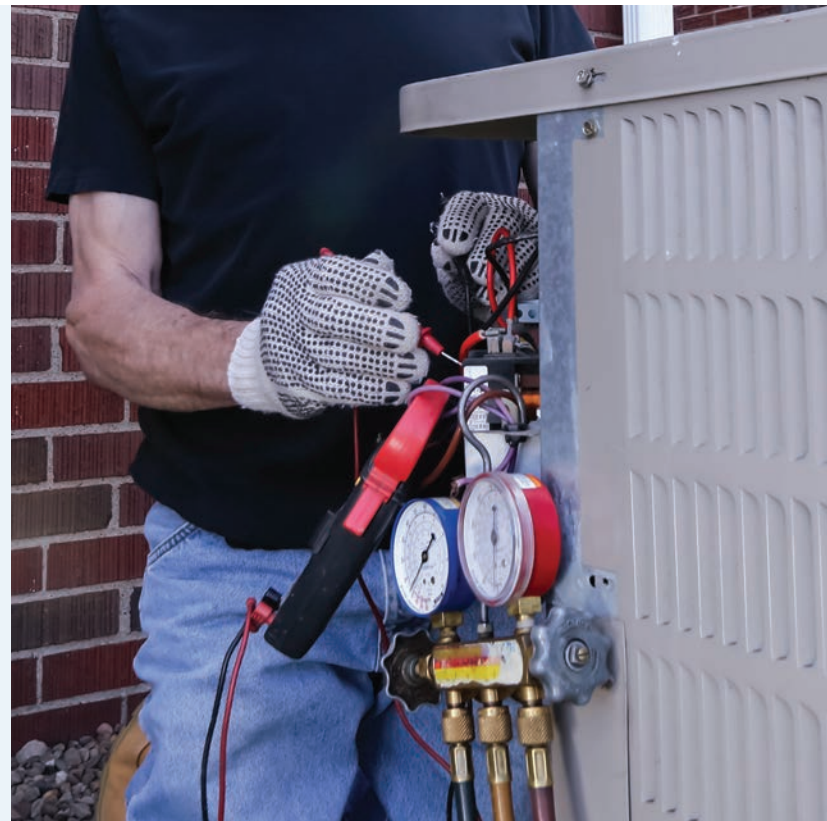


Beginner Appliance Electrical ⌚ 4 hours

One cannot be an effective appliance service technician if basic concepts are not fully understood. Everyone understands that electricity makes an appliance work. This course provides a simple and direct approach to the fundamentals of electricity related to the operating functions of refrigerators, freezers, washing machines, clothes dryers, HVAC electrical components, dishwashers, and gas and electric ranges.

Advanced HVAC: Electrical Troubleshooting Fundamentals ⌚ 3 hours

This class employs wiring diagrams and illustrations along with detailed descriptions of specific electrical system problems.





PRO TRAINING INTERIOR



Beginner



Preparing a Home ⌚ 2 hours

This class provides an overview on all aspects of the importance and procedures of making apartment homes ready for a new resident. Topics covered in this class include:

- Walking the make ready
- Accountability and documentation
- Organizing the make ready process
- Scheduling contractors
- Timely completion of make ready work
- Final inspection
- Following up after the resident moves in

Doors and Windows ⌚ 1.5 hours

If a window opens when a door closes, then we have a problem. This class will cover the basic essentials needed for door and window maintenance and repairs.



Keys and Locks ⌚ 1.5 hours

Don't get locked out. This class puts the keys to success within your grasp. We will cover basic maintenance of keys and locks.



Intermediate

CPO: Certified Pool Operator*

The CPO certification program includes a review of pool and spa chemistry, testing, treatment, filtration, maintenance, automatic feeding equipment and government requirements. The CPO certification program requires an open book proctored examination.

Class instructors

- Terry Munoz
- Josep Veciana
- Rick Sisco

2-day course[†]

Available in English and Spanish

Class fee: Only \$351 + tax
(Includes materials and test)

Certification good for 5 years**

Florida eligible, SC additional fees may apply.

Pool School

These classes provide an overview of basic systematic measures that are used in troubleshooting pool challenges and solutions to safely resolve the issues that maintenance technicians encounter on a daily basis. This will be divided into multiple sessions and each session will cover one topic, including various elements of water chemistry, circulation, filtration, pool equipment, codes and safety functions.

Classes offered:

Beginner

Pool School: Cleaning ⌚ 1.5 hours

Pool School: Water Safety ⌚ 1.5 hours

Intermediate

Pool School: Filtration ⌚ 1.5 hours

Advanced

Pool School: Circulation ⌚ 1.5 hours

Pool School: Water Chemistry ⌚ 1.5 hours



*CPO Certification is issued through PHTA. Cameras are required for virtual testing.

**In most states.

† Registration closes 30 days in advance; enrollment is required. No cancellations after enrollment. A second confirmation will be sent after registration is closed. If this confirmation is not received, registration will be canceled.



OSHA

Safety first is a common motto, but many companies think their employees are acting safely by using common sense. Unfortunately, maintenance teams find themselves in interesting situations where common sense doesn't always prevail. That is why consistent safety training is needed.

Classes offered:

Beginner

Overview ⌚ 4 hours

Intermediate

Fall Protection ⌚ 1.5 hours

Hazard Communication (GHS) ⌚ 1.5 hours



Appliances **overview**

These courses provide an overview of basic systematic measures that are used in troubleshooting appliance problems. Solutions to safely resolve the issues which maintenance technicians encounter on a daily basis will be covered for:

Beginner

Appliance Electrical ⌚ 4 hours

Intermediate

Dishwasher/Garbage Disposal ⌚ 2 hours

Clothes Washer/Dryer ⌚ 2 hours

Refrigerator/Icemaker ⌚ 2 hours

Range (gas and electric) ⌚ 2 hours

Water Heater ⌚ 3 hours

Advanced

Troubleshooting ⌚ 4 hours



Beginner

HUD: Preparing for HUD REAC/ NSPIRE Inspections ⌚ 3 hours

Do you manage properties that are subject to HUD REAC/HUD NSPIRE inspections? And if not, did you know that local jurisdictions may have the authority to inspect your properties, especially for licensing requirements? In either case, this 3-hour class offers valuable insights and practical tips to help you successfully prepare your property for inspections.



Beginner

A/C Maintenance Professional Certification

This class includes three 4-hour sessions over 3 days. These three sessions cover the refrigeration cycle, refrigerants and oils, and refrigeration circuit components:

Session 1

- Lower temperature/pressure relationship
- Heat
- The refrigeration cycle

Session 2

- Refrigerants
- Refrigerant oils
- Retrofitting

Session 3

- Evaporators
- Condensers
- Compressors
- Metering devices

3-day course*

\$185* + tax

Enrollment will be required; registration closes 30 days in advance. No cancellations after enrollment.

*Fee includes 3 sessions, materials and certification exam fees.



Beginner



Free webinar

From Lowe's Pro Academy

HVAC: Break the Code

🕒 2 hours

This course presents an overview of current codes and upcoming changes that will impact the HVAC industry. From field techs to upper management and procurement specialists, HVAC: Break the Code is designed for a wide range of skill levels.

Covered in this course:

- What is HVAC certification?
- EPA 608 Certification
- Refrigerant transition
- GWP and low-GEP refrigerants
- A2L
- AIM Act
- Equipment and installation standards
- Model building codes





Beginner

EPA 608 Certification

The federal government requires all individuals who open a system or container holding a controlled refrigerant to be certified. Persons who work on stationary equipment or use refrigerant designed for these systems can become certified by passing a proctored Section 608 examination. This class will include a review of the EPA study guide in three 4-hour sessions over 3 days.

Session 1: Core and Type I

Session 2: Type II and III

Session 3: Complete review

Registration closes 30 days in advance; enrollment is required. No cancellations after enrollment.

3-day course*

Available in English and Spanish

Class fee: \$120 + tax**
(Includes materials and test)

*Registration closes 30 days in advance; enrollment is required. No cancellations after enrollment.

**Includes fees for study guide and exam, which must be scheduled online with a third-party proctor. Access to the exam is available 72 hours after the class review.



Beginner



Introduction to Refrigeration

🕒 2 sessions — 1.5 hours each

This class will cover the basics of refrigeration. You will learn how refrigerants work, the refrigerant cycle, differences in refrigerant pressures and temperatures, and common HVAC terminology.

HVAC for Managers 🕒 2 hours

This class offers you an opportunity to learn complicated concepts in a simplified class. This class will teach you the basic science of how HVAC works, the components of the system, common troubleshooting steps and various refrigerant options.

Recovery 🕒 1 hour

This class will discuss proper steps in recovery. We will discuss vapor vs. liquid recovery, recovery equipment and tools, and safety precautions.

Leak Check and Evacuation

🕒 2 sessions — 1.5 hours each

This class will cover leak detection methods and when to use each one. You will also learn evacuation basics, including pressure/vacuum measurements, boiling points, and the tools and equipment needed.

Charging

🕒 2 sessions — 1.5 hours each

In these sessions, you will learn about refrigeration tanks, charging charts, charging procedures, condenser split, subcooling, superheat, and the effects of both a low charge and overcharging.

Coil Cleaning 🕒 1 hour

This class will discuss finding the correct cleaner, cleaning coils correctly, and caring for the evaporator and drain pan.



Intermediate

Evaporators ⌚ 1 hour

In this session, we will focus on the evaporator. You will learn the function of the evaporator, terminology, Delta T, moisture removal and humidity, superheat, and the effects of load.

Compressors ⌚ 2 hours

This session will focus on the compressor. We will cover the basic functions of a compressor, reciprocating compressor operation, lubrication, compression ratios and types of compressors.

Condensers ⌚ 1 hour

This session will focus on the condenser. We will cover how the condenser rejects heat, condenser splits, subcooling, low ambient controls, condenser maintenance, new technology, water-cooled condensers and cooling towers.

Heat Pumps

⌚ 2 days — 1.5 hours each

- Basic air conditioning
- Reversing valves
- Solenoids
- Defrost boards
- TXV/pistons
- Filter dryers
- Emergency heat cycle
- Refrigeration cycle
- Heat A/C modes
- Troubleshooting solutions

Gas/Electric Furnaces

⌚ 2 days — 1.5 hours each

- Electrical
- Heating element
- Gas pressures
- Air flow theories
- Exhaust
- Blowers
- High limits
- Temperature
- Sensors
- Voltage
- Thermostats
- Fuel pumps
- Vents
- Air filters
- Ducts
- Insulation
- Heat exchanges
- Motors
- Heat pumps
- Nozzle sizing
- Electrodes
- Burner motors
- Cell relay
- Troubleshooting solutions





Advanced

Low GWP Refrigerant Certification

🕒 2 days — 3 hours each

The industry will transition to new equipment and new refrigerants, many of which are Low GWP refrigerants. These refrigerants include A2Ls (slightly flammable) and A3s (flammable).

Did you know A2L equipment will require refrigerant detection systems? Did you know there are new protocols for the safe transportation and storage of Low GWP refrigerants?

These are the things you need to know to safely work on new equipment entering the industry. HVACR professionals will need to learn how to utilize tools and adhere to additional safety standards when installing or changing out older systems and repairing existing systems in the field.

2-day course*

Includes an intensive review of the study guide.

Class fee: \$120 + tax**
(Includes materials and test)

*Registration closes 10 days prior to class. No cancellations after registrations are closed.

**Includes fees for study guide and exam, which must be scheduled online with a third-party proctor. Access to the exam is available 72 hours after the class review.

Metering Devices 🕒 1 hour

This class will discuss the function of a metering device, types of devices, how to make adjustments to lower or raise superheat, how to identify the valve, bulb placement and how to read the valve.

Chill Smarter: Best Practices for New A2L Refrigerants 🕒 2 hours

This class will teach you to understand oil's part in the refrigeration cycle and how oil-based problems can be avoided. You will learn to assess whether to change a line set. You will also learn about the best practices for nitrogen use in HVAC installations and brazing issues with system retrofits. This class will help you to understand equipment matching requirements.

The session will also cover A2L mitigation requirements and A2L compatible tools and best practices.





Advanced

Diagnosing Compressor

🕒 1 hour

In this session, we will cover the major causes of compressor failures: liquid slugging, flooding, flooded start and overheating.

HVAC: Refrigeration Troubleshooting Scenarios

🕒 2 hours

This class employs refrigeration diagrams and illustrations along with detailed descriptions of specific refrigeration system problems.

HVAC: Electrical Troubleshooting Fundamentals

🕒 2 hours

This class employs wiring diagrams and illustrations along with detailed descriptions of specific electrical system problems.





Beginner



Moisture and Indoor Air Quality

🕒 3 hours

Uncontrolled indoor moisture can cause major damage to the building structure and negatively impact indoor air quality (IAQ). IAQ affects the health and comfort of your residents. This course helps you understand how to appropriately manage these conditions.

Water Extraction Principles

🕒 2 hours

From small leaks to floods, water intrusion is a common problem. This class reviews the steps needed to properly extract water and dry out areas to mitigate damages or resident claims.





Intermediate



Mold Remediation Principles ⌚ 2 hours

This course will discuss industry specifics of how to properly deal with moisture problems, the inevitable fungal growth and fallout from worried residents. This is still a large industry issue that needs to be handled properly and documented thoroughly by trained maintenance staff members. This course will explain what you are looking at, diagnose why it's there, give you techniques to deal with it, and ultimately manage the occurrence properly in order to protect the property, employer and client.

Asbestos Awareness ⌚ 1.5 hours

Asbestos is the name given to a group of naturally occurring minerals. Asbestos has been used in products such as insulation, floor tiles, building materials, vehicle brakes and clutches. Asbestos is well-recognized as a health hazard and its use is now highly regulated by both OSHA and the EPA. Learn what asbestos is, how to manage it, and the federal laws and guidelines necessary to manage your property. This course incorporates O&M plans and how to operate under these guidelines.



Lead-Based Paint Issues and the EPA's Renovation, Repair and Painting Rule

⌚ 3 hours

Are your pre-1978 properties EPA-compliant? This overview covers key questions to ponder:

- Has the property been tested for lead-based paint?
- Is the complete copy of the lead-based paint report on-site?
- What triggers the RRP Rule?
- What is a certified firm?
- How long must I save records of lead-based paint work activity?



Beginner



Foundation Care and Repair

🕒 1.5 hours

Keep your buildings on solid ground. This course is designed to help you understand foundations and stress fractures, how to prevent problems and how to handle repairs.

Elevator Maintenance 🕒 2 hours

Elevators often come with maintenance contracts with the proprietary service company for the manufacturer. However, you still need to be aware of what certain codes and general requirements are. You might be able to save money on your service contract.



Pest Control 🕒 2 hours

This class will cover basic pest control management. Know when to treat a single apartment unit versus multiple units. Learn small ways to prevent pest intrusions. Understand what to tell your residents when an issue arises.



Beginner



Property Exterior ⌚ 1.5 hours

This class will cover preventative maintenance for property exteriors.

Moisture and Indoor Air Quality

⌚ 3 hours

Uncontrolled indoor moisture can cause major damage to the building structure and negatively impact indoor air quality (IAQ). IAQ affects the health and comfort of your residents. This course helps you understand how to appropriately manage these conditions.





Beginner

Dousing Concerns: Navigating Multifamily Fire Codes with Confidence

🕒 1.5 hours

Each year an estimated average of 106,700 multifamily residential building fires are reported. These fires cause an estimated annual average of 400 deaths, 3,875 injuries and \$1.7 billion in property loss. Smoke alarms are present in 64% of multifamily residential building fires. There are no statistics reflecting the additional cost of litigation. Technology is evolving and codes are becoming more stringent. New code updates went into effect impacting the multifamily industry in June 2024. This session will provide information on navigating code updates and technology and provide safety awareness to increase fire prevention efforts in your communities.

Intermediate

Managing Bedbug Incidents 🕒 2 hours

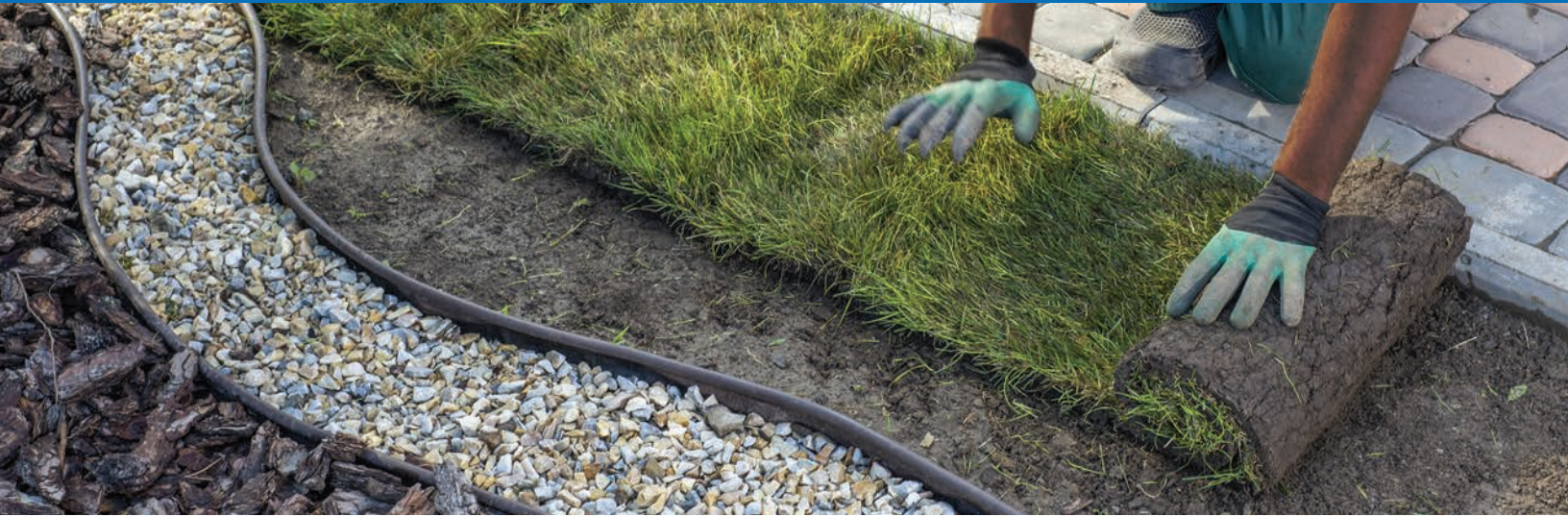
This class focuses on basic information and actionable steps to help you manage bedbug incidents on site. The class will cover:

- Bedbug biology
- Methods of detection
- Reasons for increased rate of infestations
- Use of pesticides indoors
- Integrated pest management plans
- Response to resident claims
- Proactive steps you can take





Beginner



Turf Wars ⌚ 1.5 hours

We will cover a variety of topics from curb appeal to landscape choices, and irrigation to bed maintenance.



Water Conservation ⌚ 1.5 hours

What are ways to save water without sacrificing comfort? Learn all the ways you can save on water usage and costs.



PRO TRAINING SEASONAL



Beginner Seasonal

Get ready for the upcoming season.

Classes include:

Preparing Fall/Winter ⌚ 1.5 hours

Preparing Spring/Summer ⌚ 1.5 hours

Intermediate

Crisis Response ⌚ 2 hours

Learn how to be prepared in advance of a crisis, develop a plan, execute the plan and initiate recovery. Topics covered include:

- Preparing
- Evacuating
- Team procedures
- Building prep
- 72-hour emergency kits
- Recovery
- Insurance

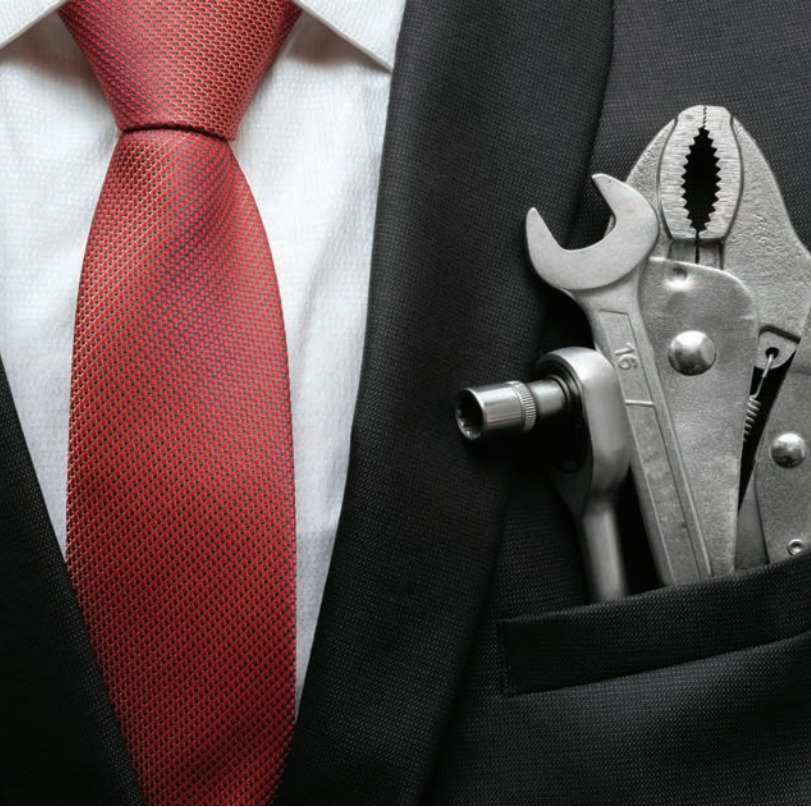




PRO TRAINING PROFESSIONAL DEVELOPMENT



Beginner



Maintenance for Managers

🕒 3 days — 3 hours each

This course is designed specifically for managers and is geared toward increasing your knowledge base and improving your management skills. Whether you are new or have been doing this for years, this class will provide excellent tools that will help you grow and develop your knowledge and skills as they pertain to maintenance.

Maximize Efficiency — Priorities Matter

🕒 2 hours

Time is constant and cannot be altered, so how do you get the most out of your time? Priority management is not time management. This class will provide you with techniques to assist you in setting priorities so you can increase productivity.





PRO TRAINING PROFESSIONAL DEVELOPMENT



Beginner

Success Synergy: Crafting a Collaborative Culture

🕒 3 hours

In today's fast-paced business environment, fostering a culture of collaboration is more important than ever. This session will explore the key elements needed to build a workplace where open communication, mutual trust, and shared goals drive success. We will discuss practical strategies for enhancing teamwork, understanding diverse communication styles, and overcoming common barriers that hinder collaboration. Whether you're a leader or a team member, you'll leave with actionable insights on how to create a culture that empowers everyone to work together effectively, boosting both individual performance and organizational growth.

Advanced

Shop Management — Inventory Control

🕒 3 hours

A multifamily real estate annual operating budget allows you to compare the actual financial performance of your property to your long-range projections for future income and expenses. A budget can help you maximize profitability and avoid unforeseen major repairs and expenses. This course will help you determine performance targets; forecast income and expenses; set up inventory controls; and plan for projects, capital improvements and more.





Beginner

Fair Housing — It's Hip to Be Fair ⌚ 4 hours

Fair Housing training is at the core of operations, risk mitigation and professional development for every housing industry professional and company. It's Hip to Be Fair provides an in-depth look at Fair Housing laws and best practices including federal, state and local protected categories; reasonable accommodations and modifications; occupancy policies; harassment; prohibited services and more.



What Your Nose Knows ⌚ 2 hours

Do you know the difference between a pet, an emotional support animal, service animal or therapy dog? Over the last five years the number of HUD violations being filed under the animal code has taken the number one spot, previously held by disability violations. This session will take a deeper dive into these animals, how they are classified, and the steps we need to take to ensure we are abiding by the law. Understanding these rules is crucial for creating inclusive and supportive housing environments for individuals with disabilities who rely on service animals or emotional support animals.



Wrenches to Rights ⌚ 3 hours

This interactive class is designed specifically for maintenance teams to understand the essentials of Fair Housing regulations and how they apply to your daily work. Learn how to recognize and prevent discriminatory practices, ensure compliance with fair housing laws, and create a welcoming environment for all residents. Through real-world scenarios and practical tips, you'll gain the knowledge and confidence to uphold fair housing standards while performing maintenance duties, making your community a better place to live for everyone.





Beginner

The Art of Painting ⌚ 1.5 hours

“Prepping for PRO-fection.” This class is an overview of how to successfully remove and install caulk like an expert, make essential drywall repairs and master the art of painting.

What Is Paint? ⌚ 1.5 hours

This class will introduce you to what paint is and how we use it. We will cover different types of paint, function and performance, surfaces and preparation, application and uses, and how to select color.





PRO TRAINING CERTIFICATIONS



Beginner

EPA 608 Certification

The federal government requires **all individuals who open a system or container holding a controlled refrigerant to be certified.** Persons who work on stationary equipment or use refrigerant designed for these systems can become certified by passing a proctored Section 608 examination. This class will include a review of the EPA study guide in three 4-hour sessions over 3 days.

Session 1: Core and Type I

Session 2: Type II and III

Session 3: Complete review

Registration closes 30 days in advance; enrollment is required. No cancellations after enrollment.

3-day course*

Available in English and Spanish

Class fee: \$120 + tax**
(Includes materials and test)

*Registration closes 30 days in advance; enrollment is required. No cancellations after enrollment.

**Includes fees for study guide and exam, which must be scheduled online with a third-party proctor. Access to the exam is available 72 hours after the class review.

**HEATING
VENTILATION
AIR
CONDITIONING**



PRO TRAINING CERTIFICATIONS



Beginner

A/C Maintenance Professional Certification

This class includes three 4-hour sessions over 3 days. These three sessions cover the refrigeration cycle, refrigerants and oils, and refrigeration circuit components:

Session 1

- Lower temperature/pressure relationship
- Heat
- The refrigeration cycle

Session 2

- Refrigerants
- Refrigerant oils
- Retrofitting

Session 3

- Evaporators
- Condensers
- Compressors
- Metering devices

3-day course*

\$185* + tax

Enrollment will be required; registration closes 30 days in advance. No cancellations after enrollment.

*Fee includes 3 sessions, materials and certification exam fees.



PRO TRAINING CERTIFICATIONS



Intermediate

CPO: Certified Pool Operator*

The CPO certification program includes a review of pool and spa chemistry, testing, treatment, filtration, maintenance, automatic feeding equipment and government requirements. The CPO certification program requires an open book proctored examination.

Class instructors

- David Turnage
- Terry Munoz
- Josep Veciana
- Rick Sisco

2-day course[†]

Available in English and Spanish

Class fee: Only \$351 + tax
(Includes materials and test)

Certification good for 5 years**

Florida eligible, SC additional fees may apply.



*CPO Certification is issued through PHTA. Cameras are required for virtual testing.

**In most states.

† Registration closes 30 days in advance; enrollment is required. No cancellations after enrollment. A second confirmation will be sent after registration is closed. If this confirmation is not received, registration will be canceled.



Advanced

Low GWP Refrigerant Certification

🕒 2 days — 3 hours each

The industry will transition to new equipment and new refrigerants, many of which are Low GWP refrigerants. These refrigerants include A2Ls (slightly flammable) and A3s (flammable).

Did you know A2L equipment will require refrigerant detection systems? Did you know there are new protocols for the safe transportation and storage of Low GWP refrigerants?

These are the things you need to know to safely work on new equipment entering the industry. HVACR professionals will need to learn how to utilize tools and adhere to additional safety standards when installing or changing out older systems and repairing existing systems in the field.

2-day course*

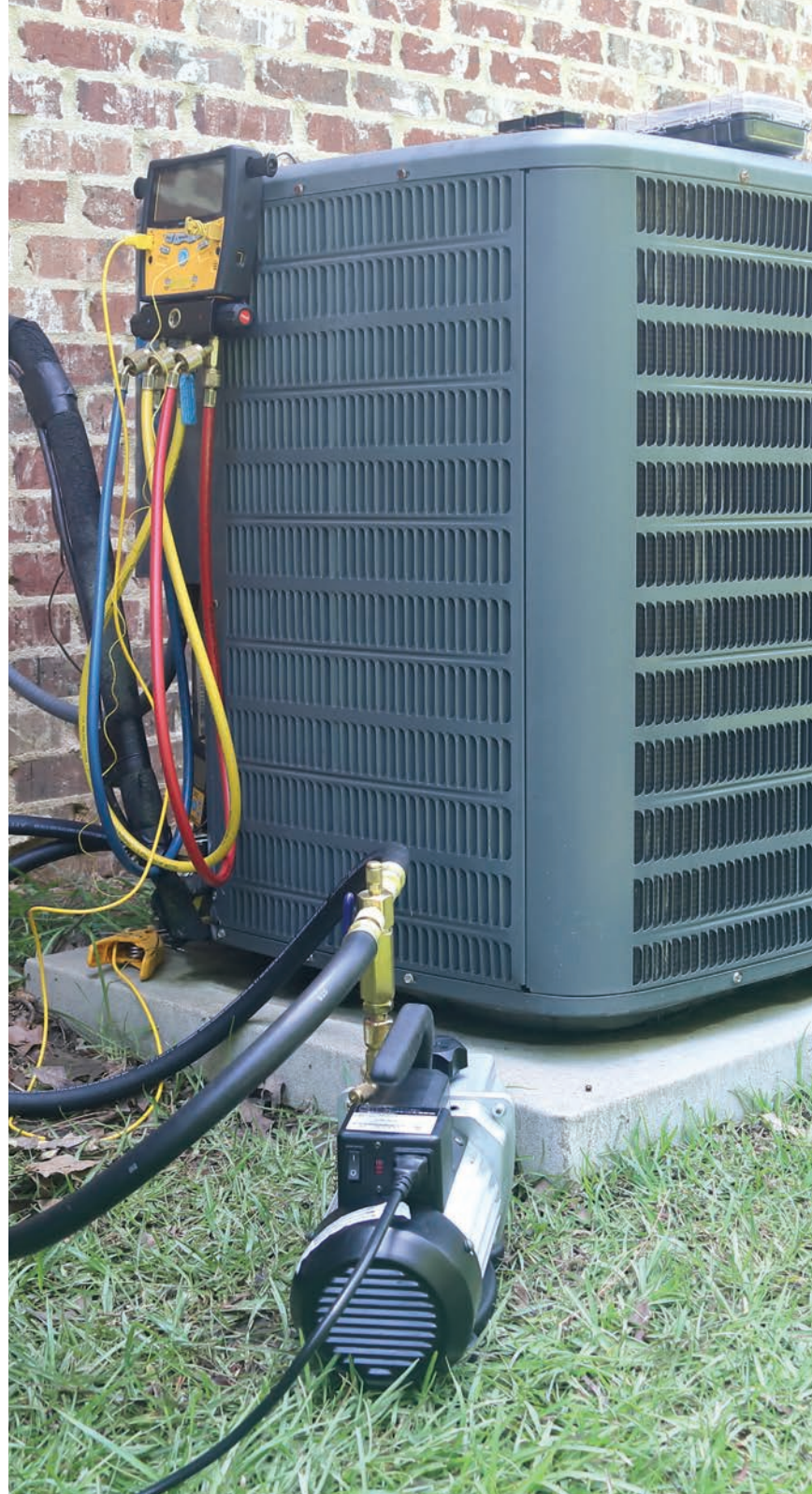
Includes an intensive review of the study guide.

Class fee: \$120 + tax**

(Includes materials and test)

*Registration closes 10 days prior to class. No cancellations after registrations are closed.

**Includes fees for study guide and exam, which must be scheduled online with a third-party proctor. Access to the exam is available 72 hours after the class review.





PRIVATE CLASSES AVAILABLE

Not seeing what you need?

Contact us to discuss a custom
solution to meet your needs.

Scan here



to visit us online at
LowesProSupply.com/Training
or email us at LowesProAcademy@Lowe.com

While information provided is periodically updated, no guarantee is given that information is correct, complete, or up-to-date. This is awareness training and for informational purposes only; it does not constitute professional advice. Lowe's Pro Supply only facilitates training, and any certification received is from a third-party company. Lowe's Home Centers, LLC and Lowe's Pro Supply, a division of Lowe's Home Centers, LLC, and instructors do not accept any responsibility for any loss which may arise from reliance on information.

©2024 Lowe's. LOWE'S and the Gable Mansard Design are registered trademarks of LF, LLC.

7996520-1007